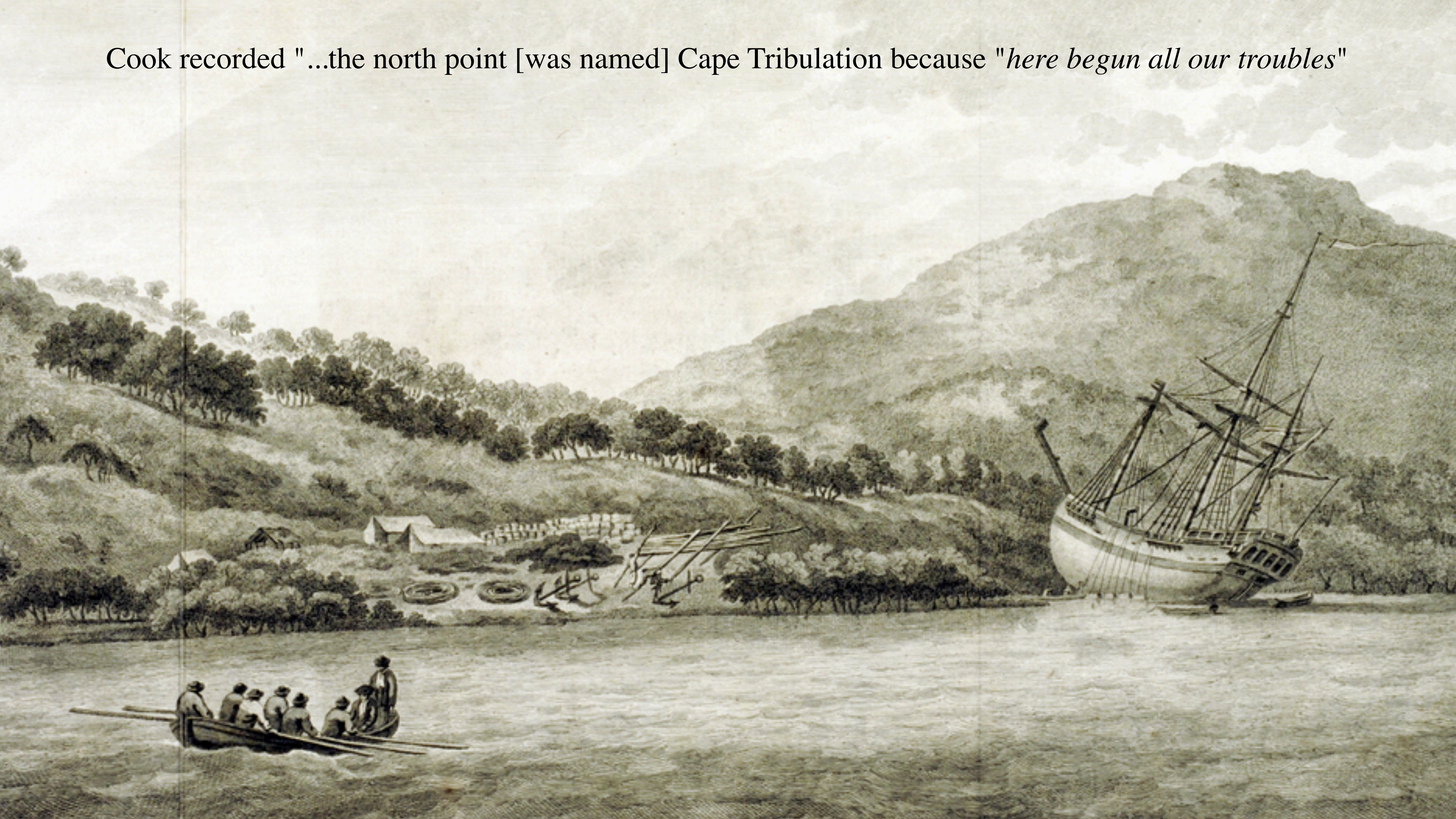


Ștefan Constantinescu

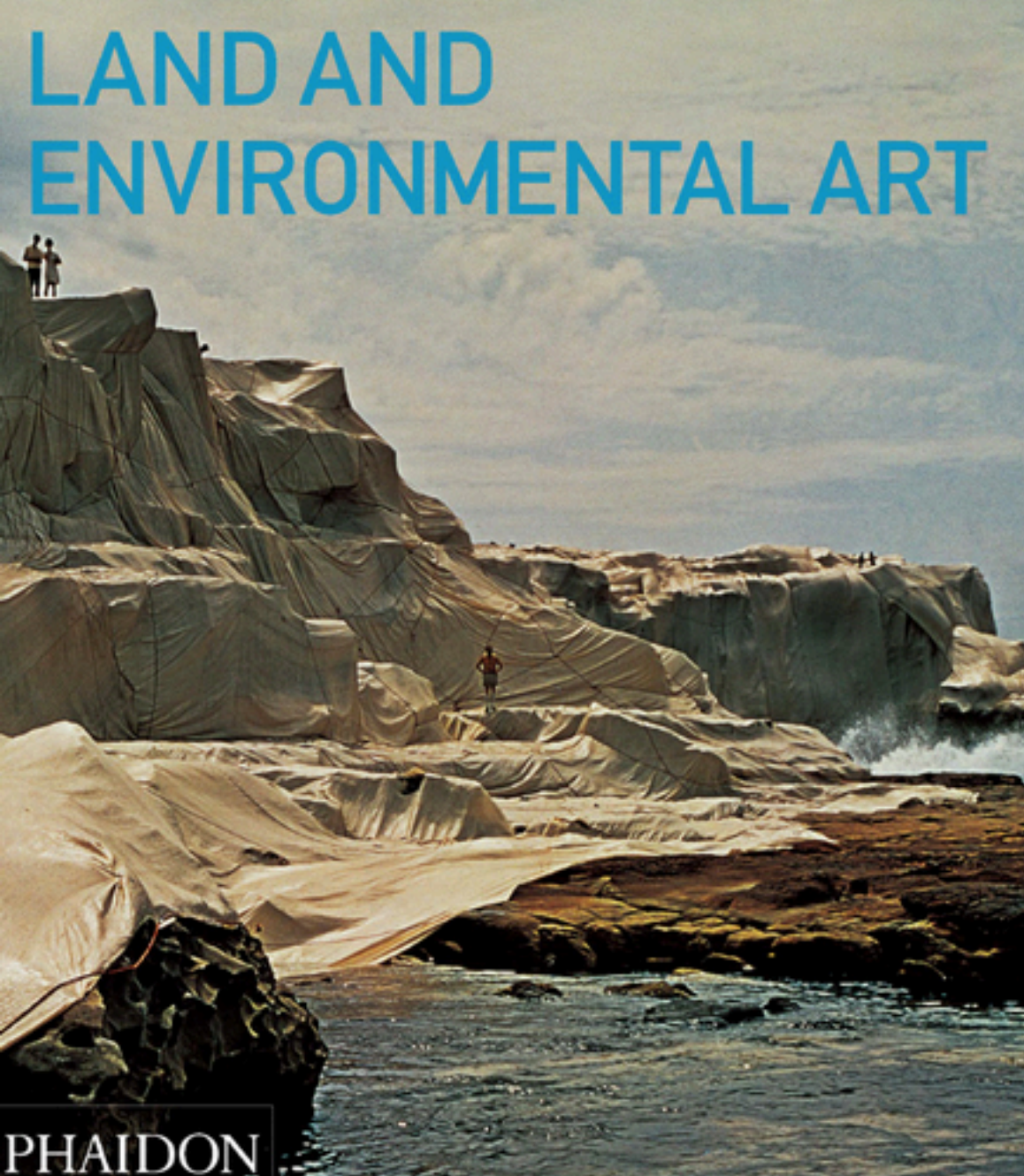
Ștefan Constantinescu



Cook recorded "...the north point [was named] Cape Tribulation because "*here begun all our troubles*"



Harta este o meta-geografie..



Modern Cartography Series
Volume 6

Reflexive Cartography

A New Perspective on Mapping

Emanuela Casti
D.R. Fraser Taylor, Series Editor



FLOWINGDATA

[MEMBERSHIP](#)

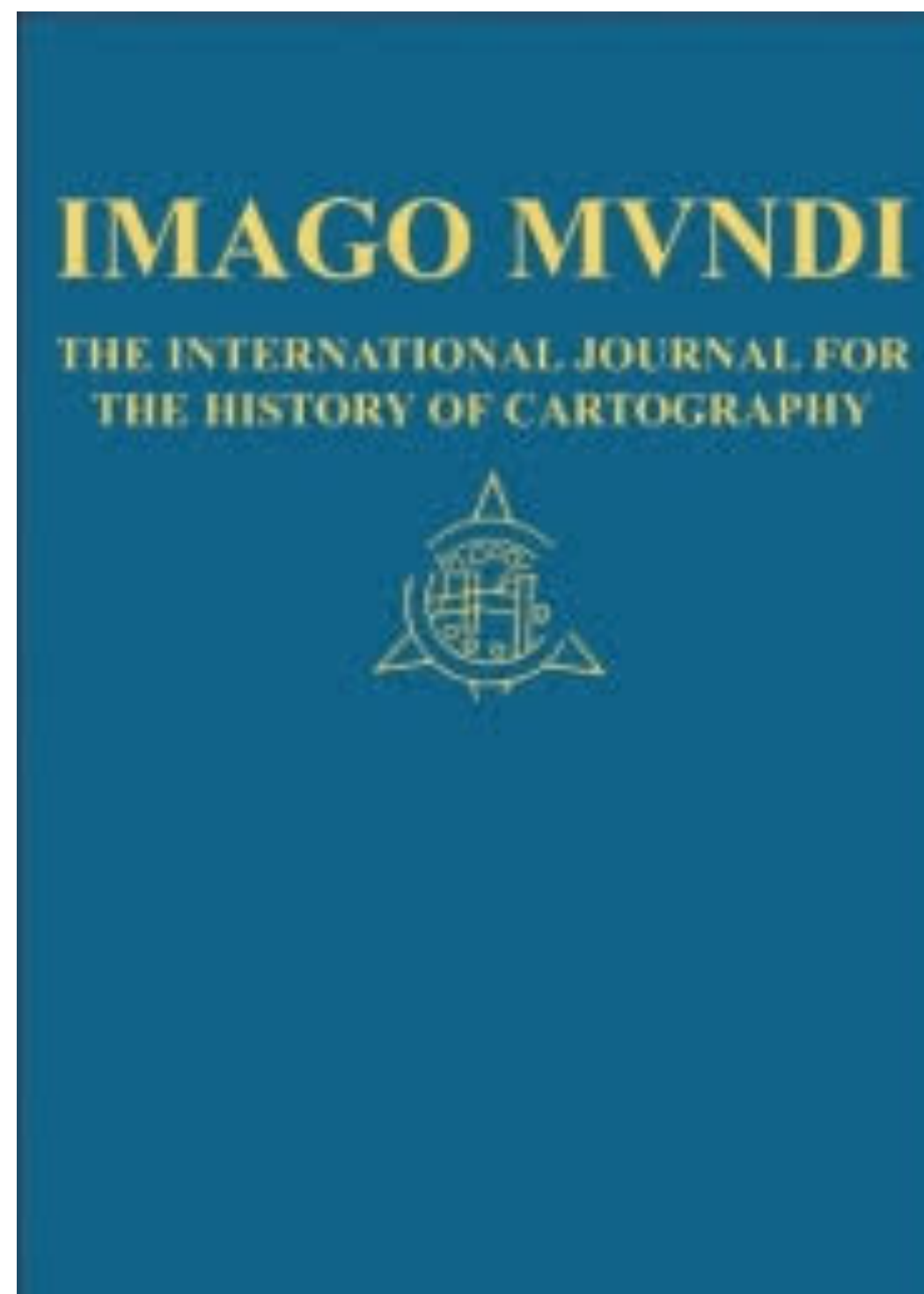
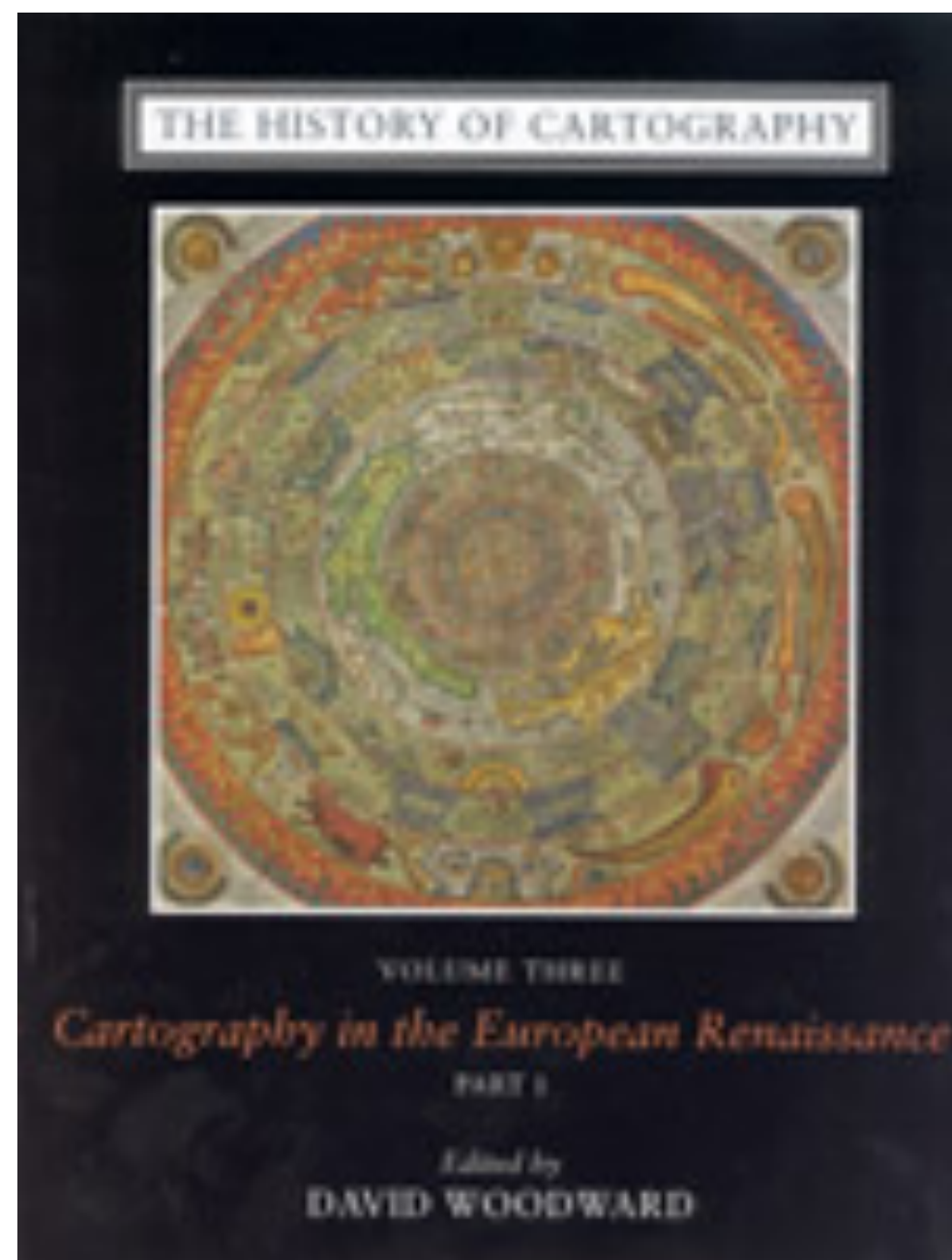
[COURSES](#)

[TUTORIALS](#)

[BOOKS](#)

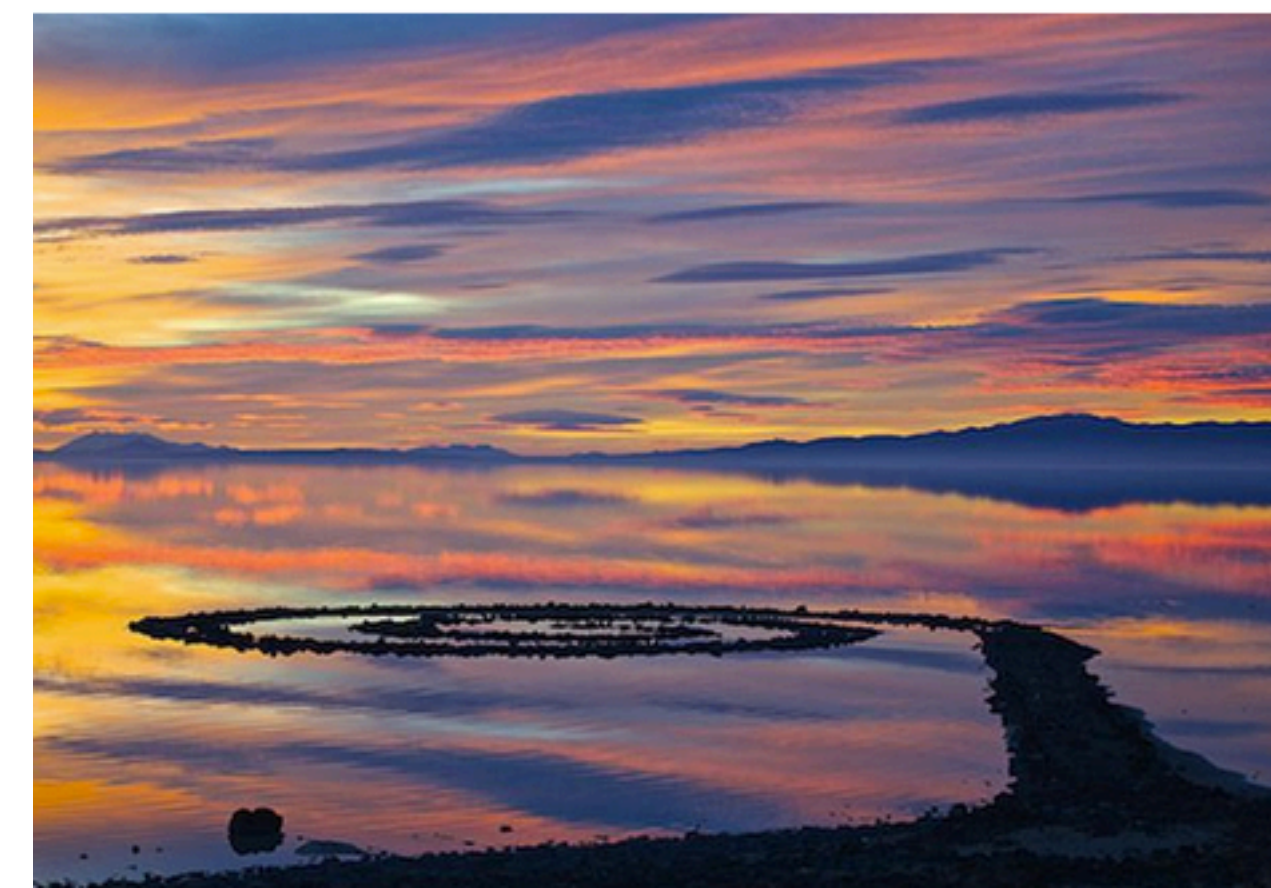
Mixing cartography and landscape drawing

POSTED TO [MAPS](#) | TAGS: [DRAWING](#), [LANDSCAPE](#) | [NATHAN YAU](#)



The Big Dig: A map of land art across America

BY [PATRICK SISSON](#) | AUG 10, 2016, 9:01PM EDT



Ethics, Policy
& Environment



Ethics, Place and Environment
Vol. 10, No. 3, October 2007, 257–261

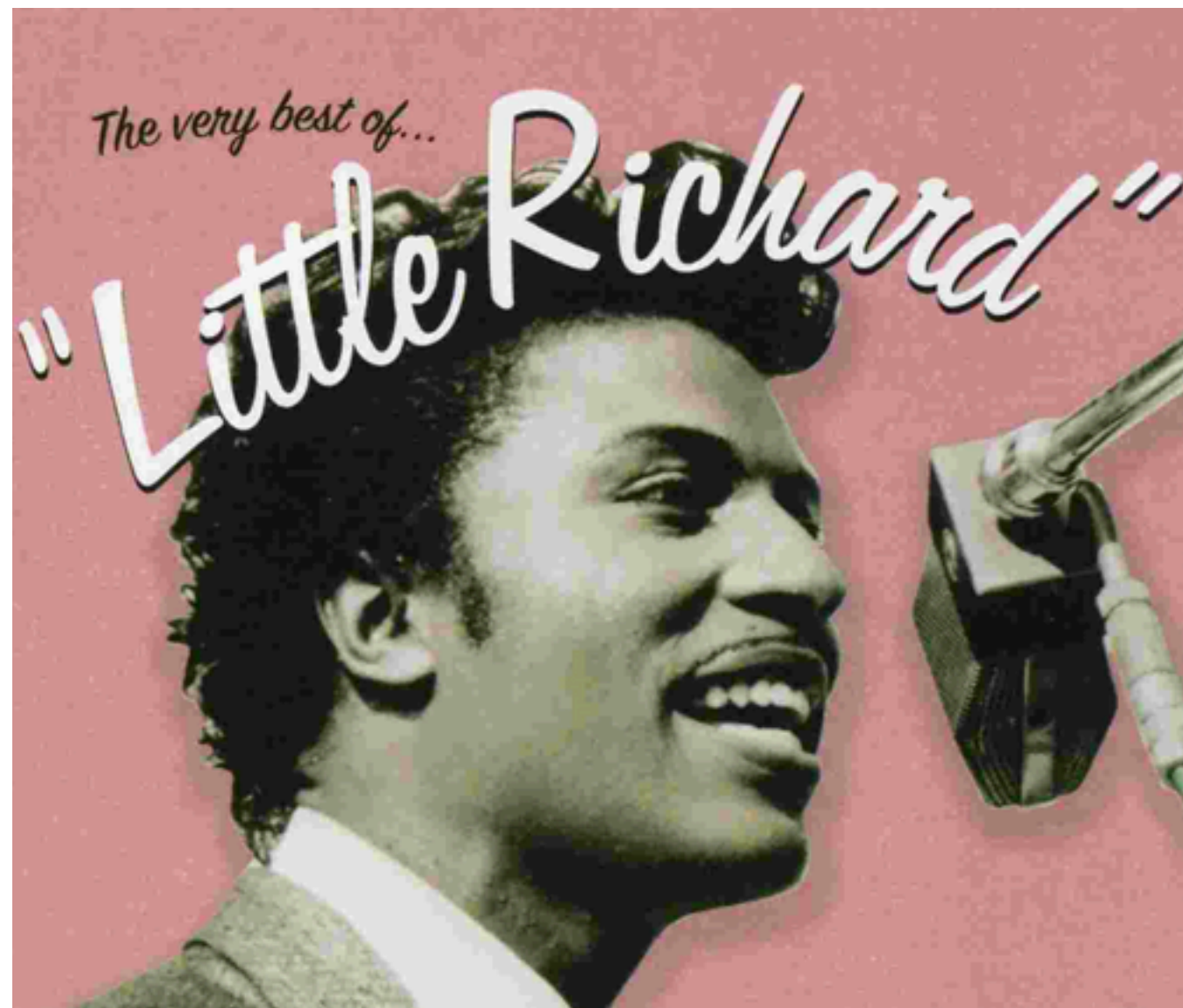
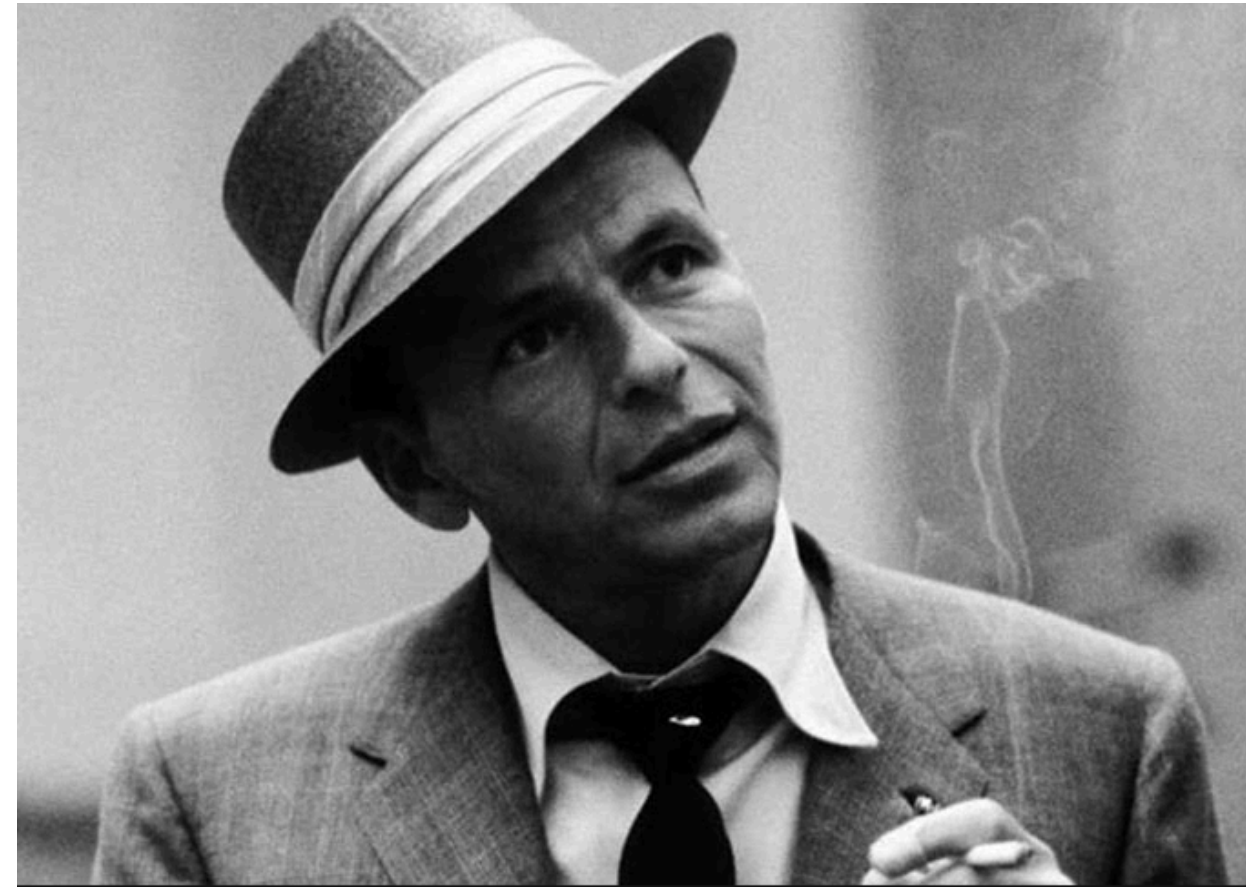


Introduction to ‘Environmental and Land Art’: A Special Issue of *Ethics, Place and Environment*

EMILY BRADY

Institute of Geography, University of Edinburgh, Edinburgh, UK

1950s



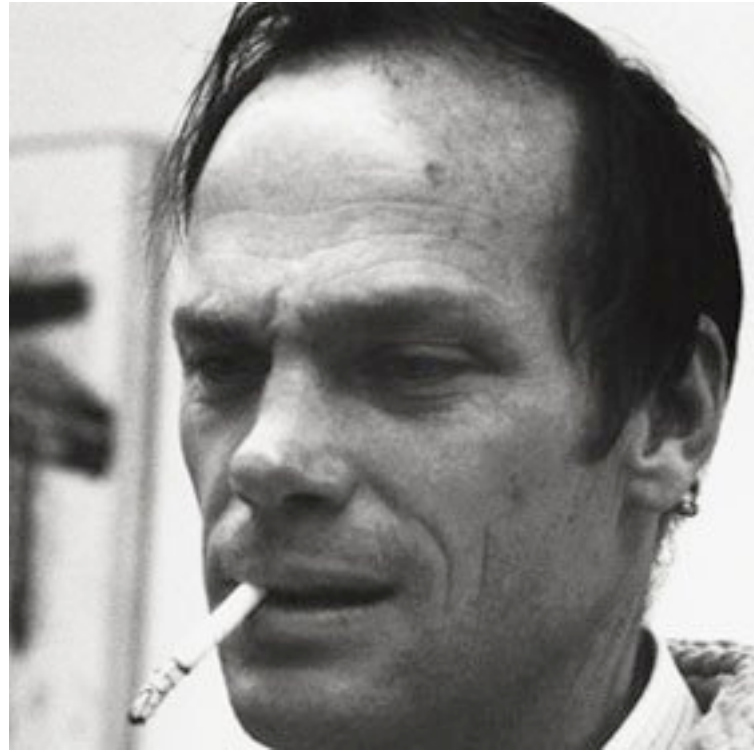
1960s



LAND and Environmental ART

Primii artiști din Land Art au fost puternic influențați de curentele socio-culturale ale perioadei:

Michael Heizer, Robert Smithson, Dennis Oppenheim, Walter de Maria, Robert Morris



Land Artists and Art Markets

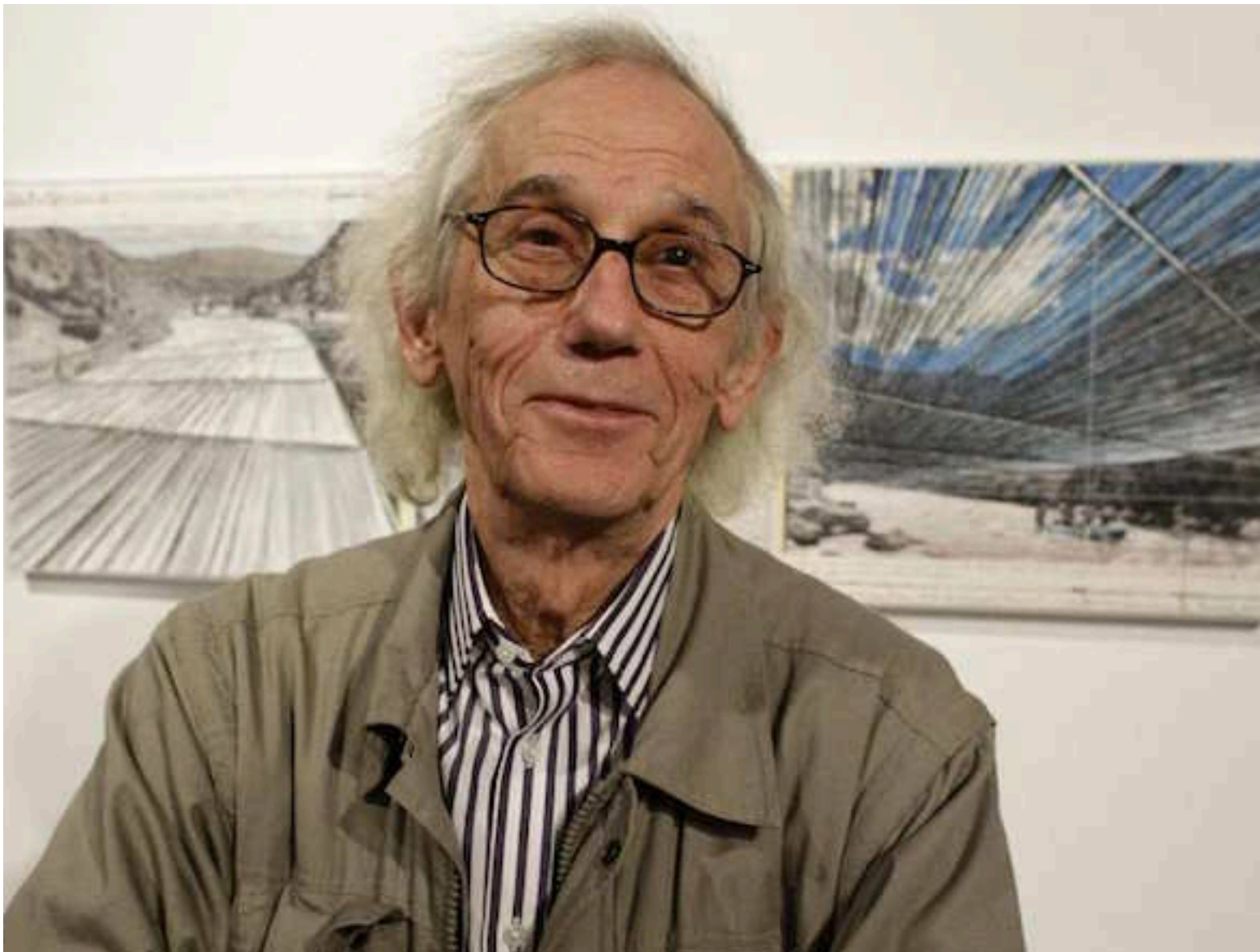
V. GINSBURGH and A.-F. PENDERS
Université Libre de Bruxelles, CP 139, 50 Av. Franklin Roosevelt, 1050 Brussels, Belgium

Table I. General characteristics of the sample

Movement	No. of artists		No. of works sold 1972–1992	Average price (\$) 1988–1992
	A priori selected	Sold at auction		
Minimal Art	15	12	367	37,500
Conceptual Art	14	14	814	33,400
Land Art	36	25	739	24,500
Christo	1	1	510	30,900
Land Art (excl. Christo)	35	24	229	13,200

Se pot distinge trei curente:

- 1) Land Art
- 2) Minimal Art
- 3) Conceptual Art

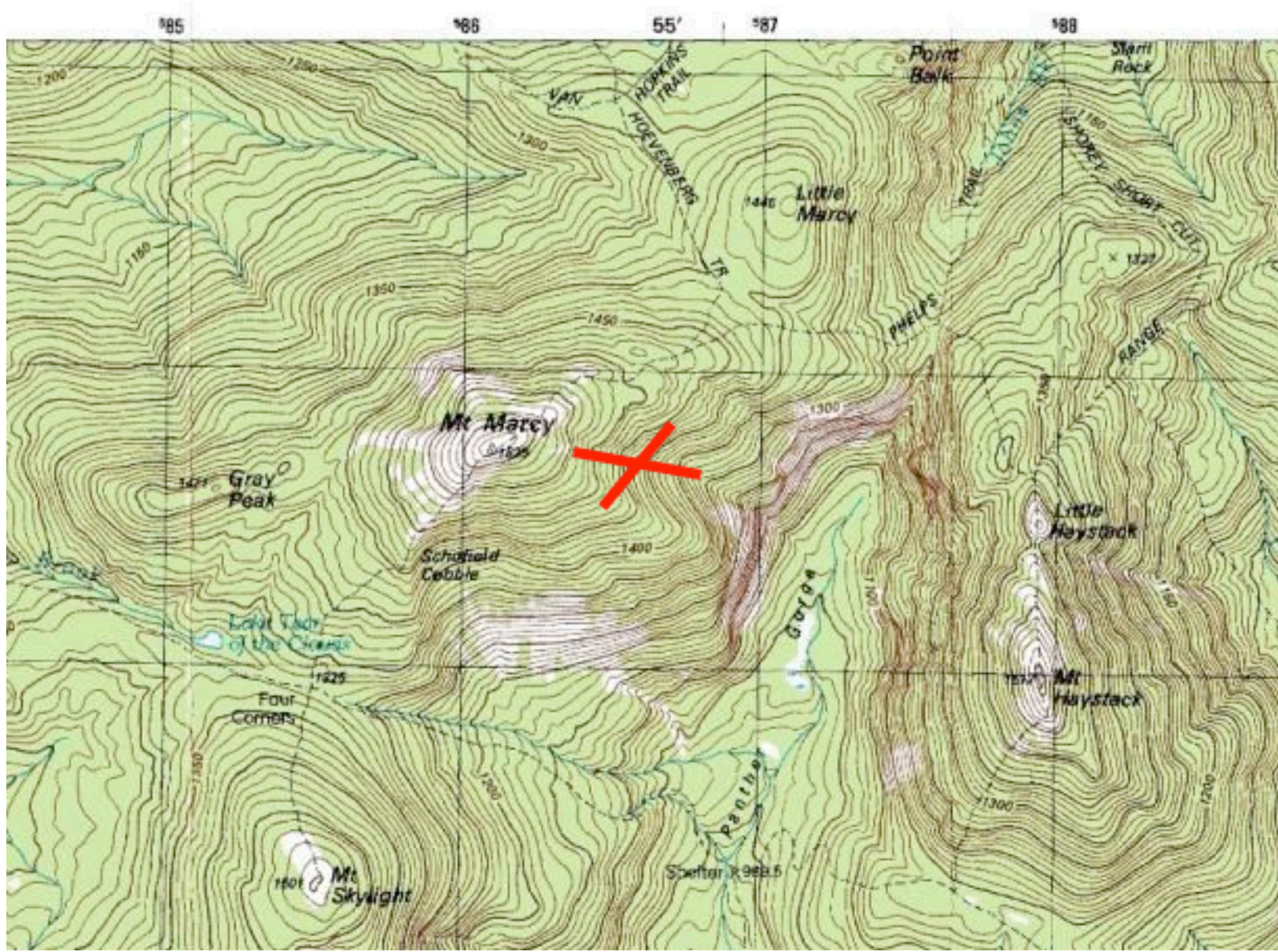


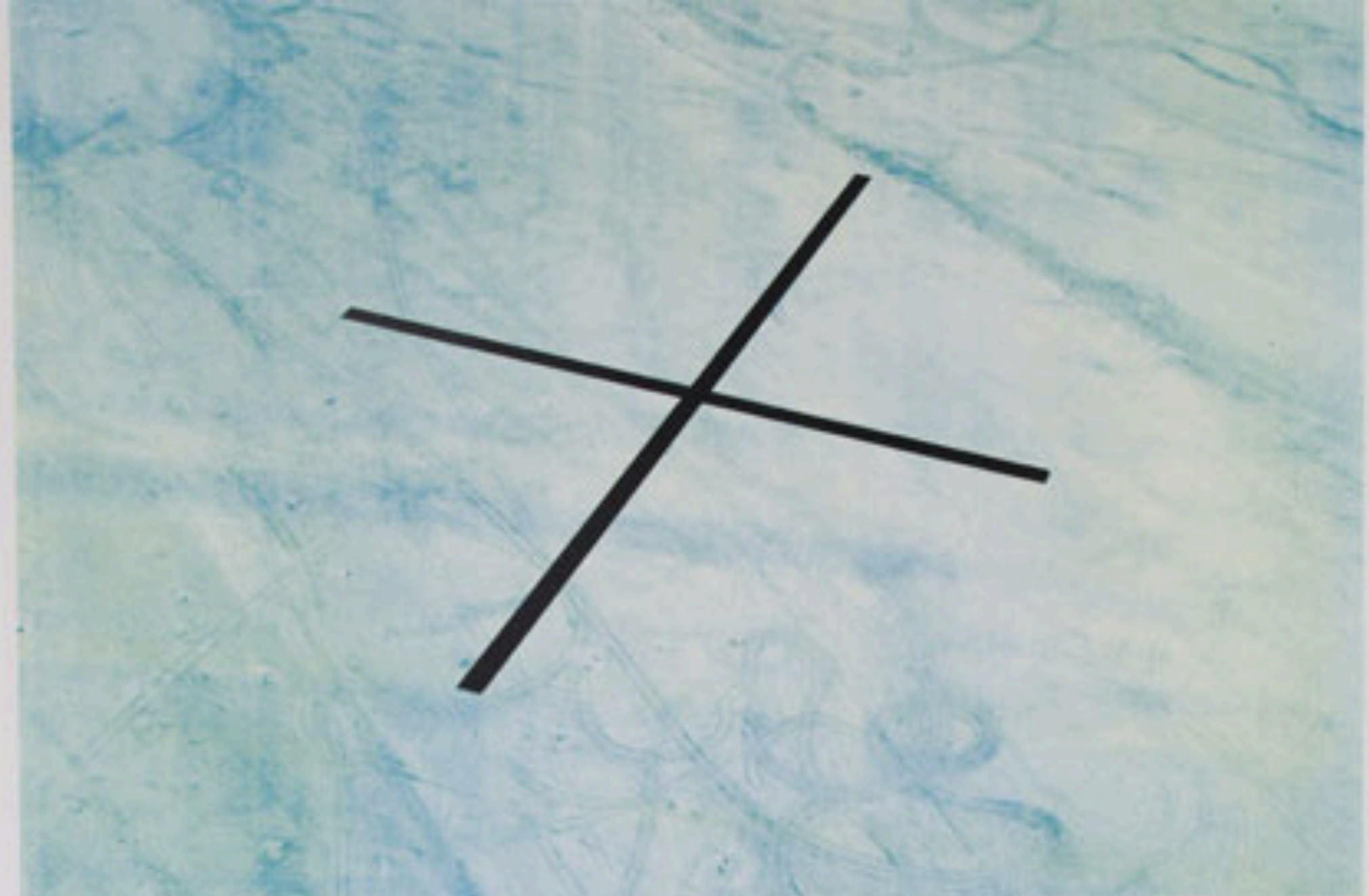


Dennis Oppenheim,

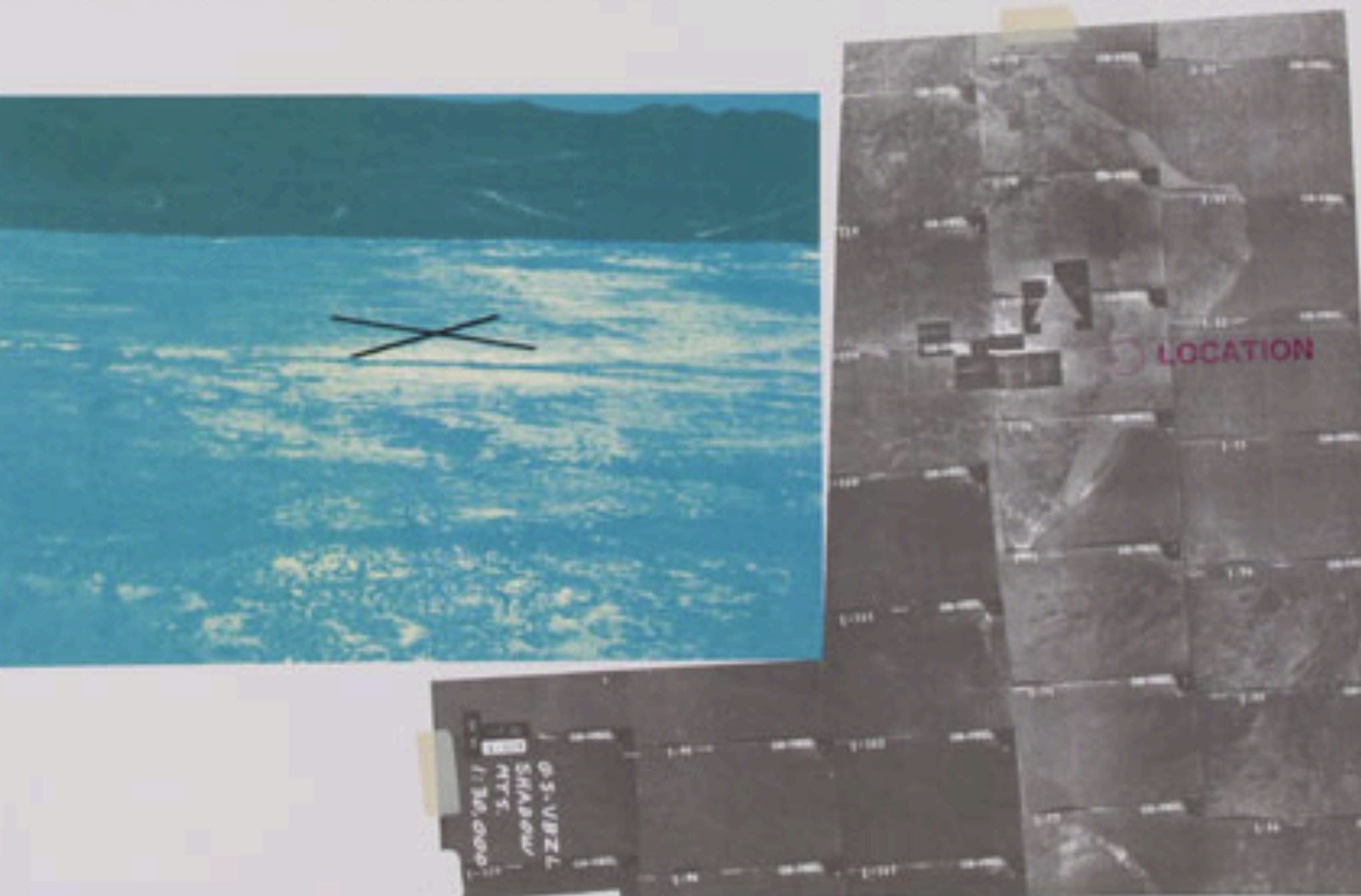
Time Line.

*Boundary between USA/Canada along St. John River;
Fort Kent, Maine. 1' x 3' x 3 mile cut between the two
countries, 1968*





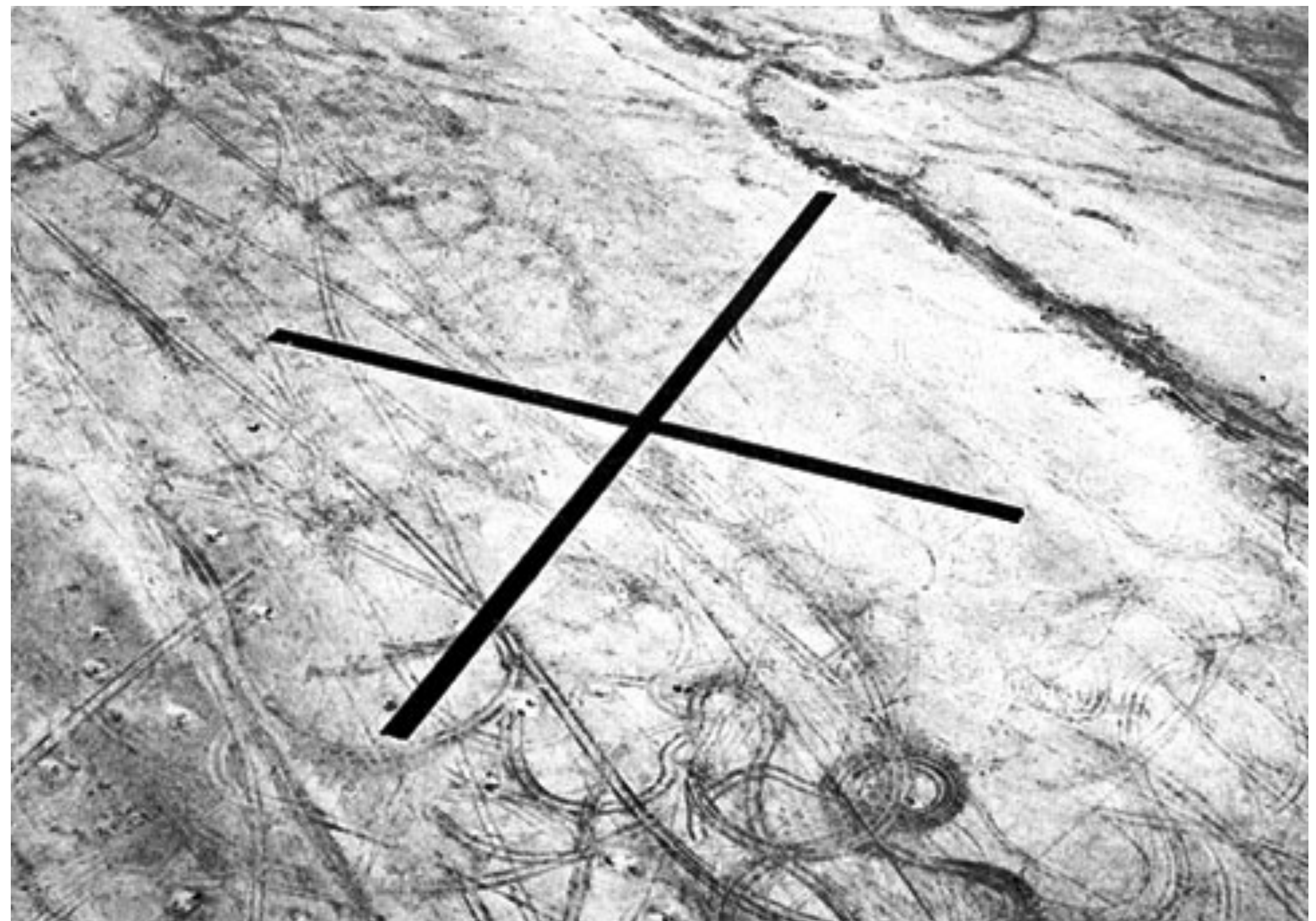
RELOCATED BURIAL GROUND. EL MIRAGE DRY LAKE/CALIFORNIA. 1978.
DIMENSIONS: 2000' SQUARE INTERSECTION. MATERIALS: BLACK ASPHALT PRIMER.



Art 157.

Dennis Oppenheim

1979



Dennis Oppenheim

Relocated Burial Ground, 1978

Lithograph in colors on Johannot paper with watermark
41 x 30 in (104.14 x 76.2 cm)

Edition of 150

Signed and numbered in pencil on lower left, recto



Walter De Maria, *The Lightning Field*, 1977



Robert Smithson

Spiral Jetty, 1970



Christo, *Running Fence* 1972-1976



Wrapped Coast

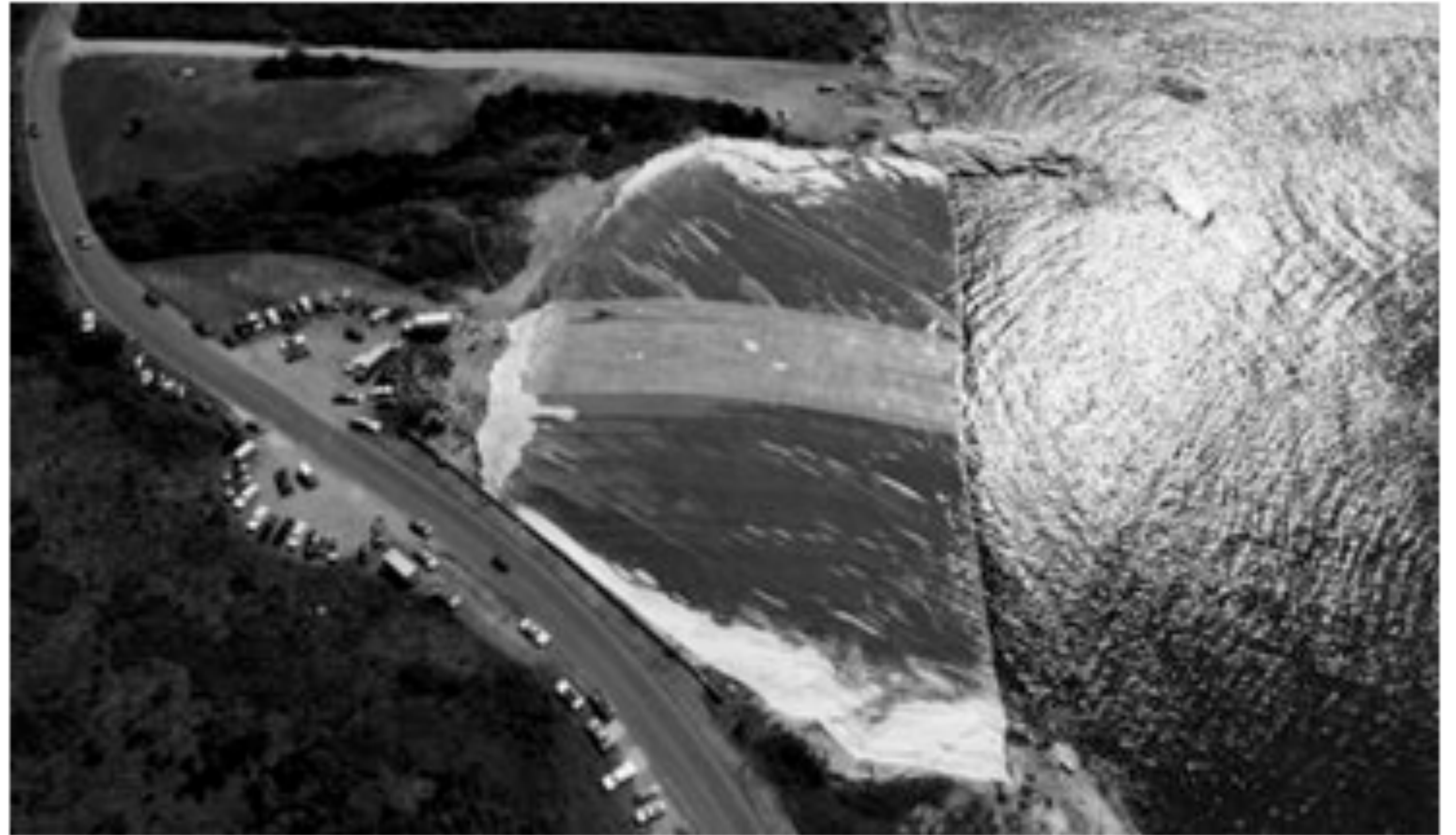
One Million Square Feet, Little Bay,
Sydney, Australia, 1968-69



Wrapped Reichstag



Valley Curtain



Ocean Front

Chip Lord, Hudson Marquez
and Doug Michels

Cadillac Ranch (1974)



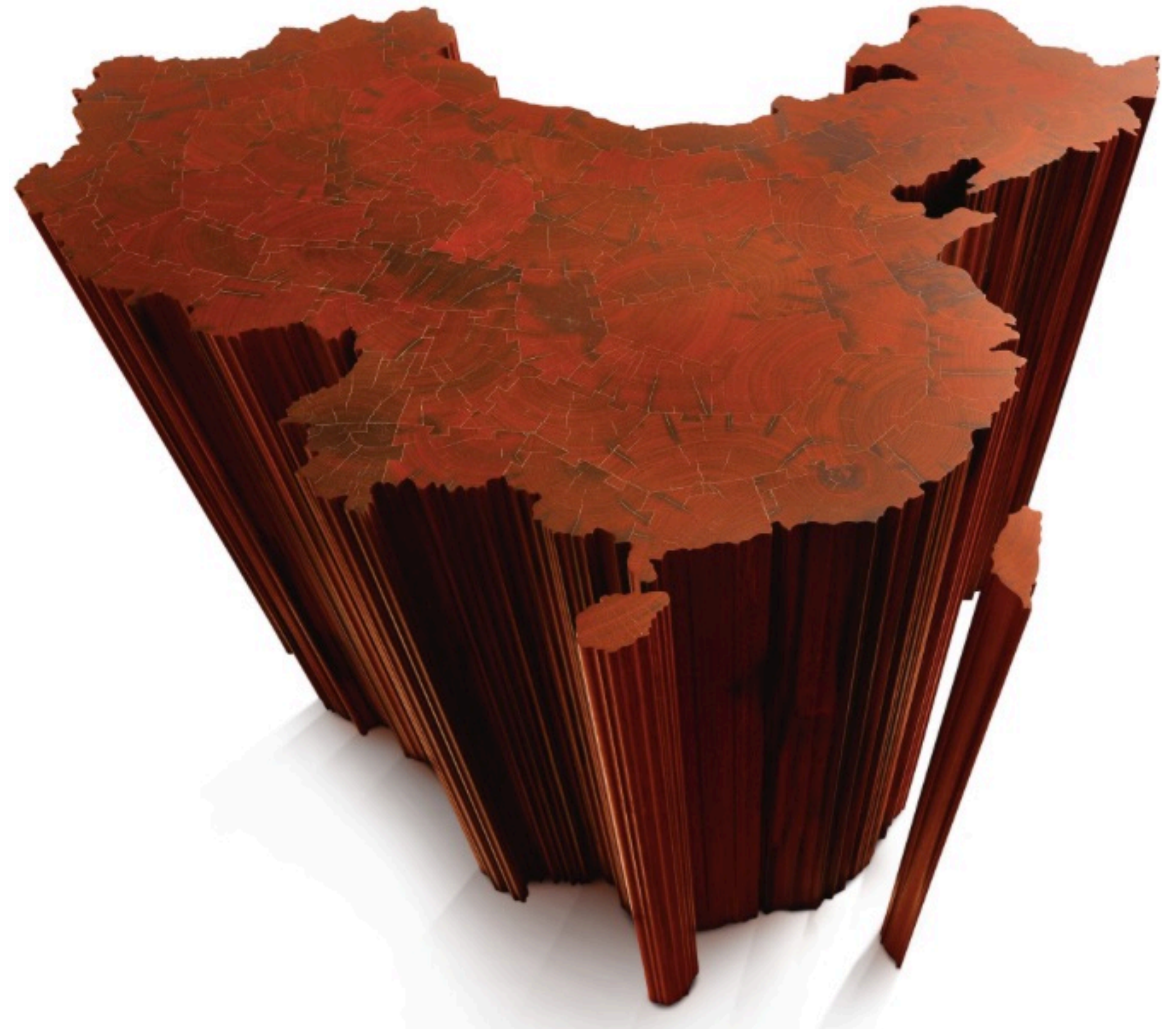


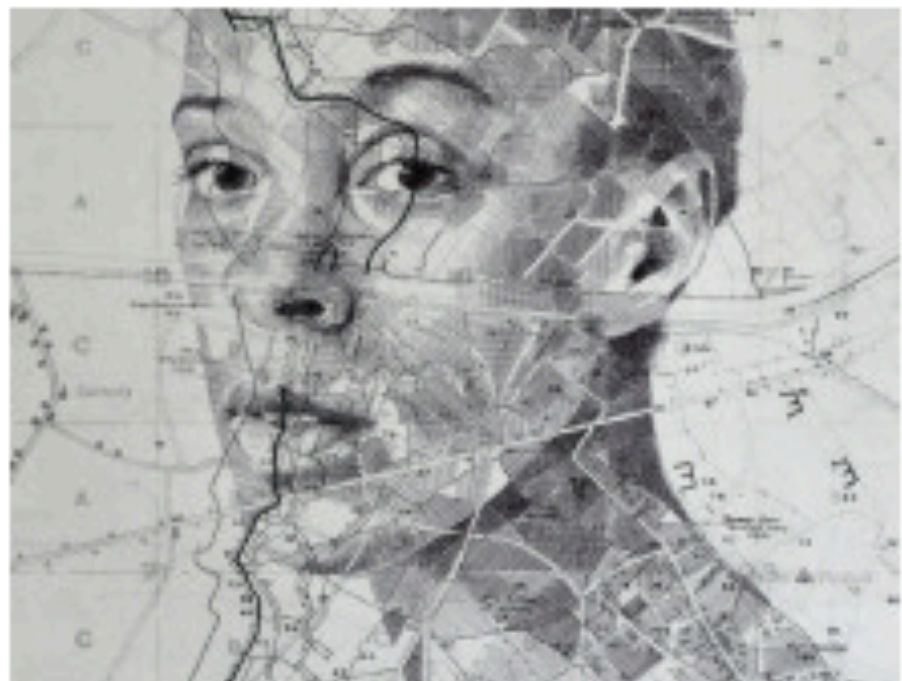
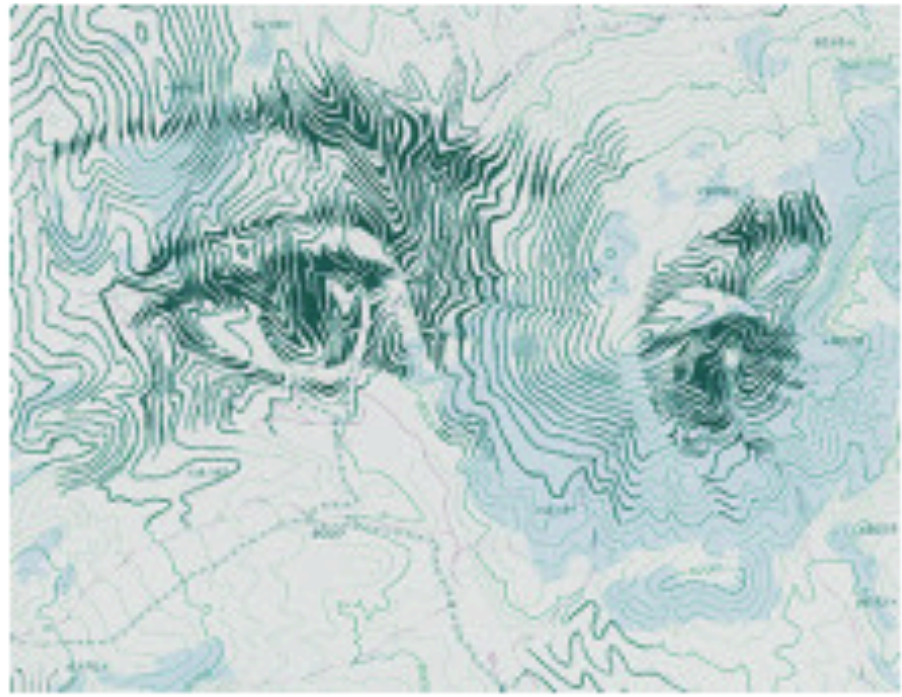
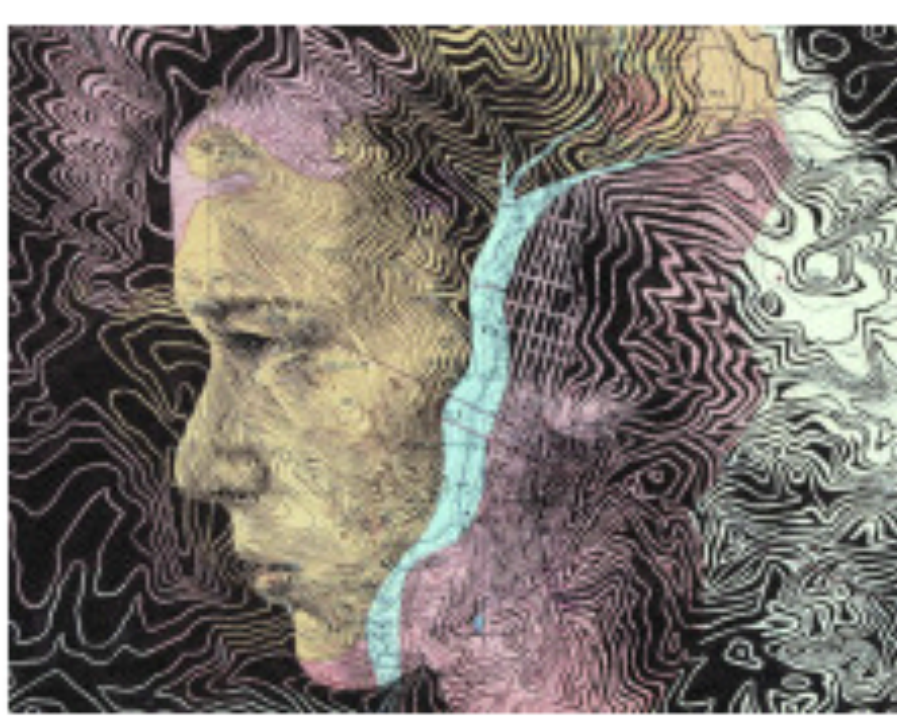
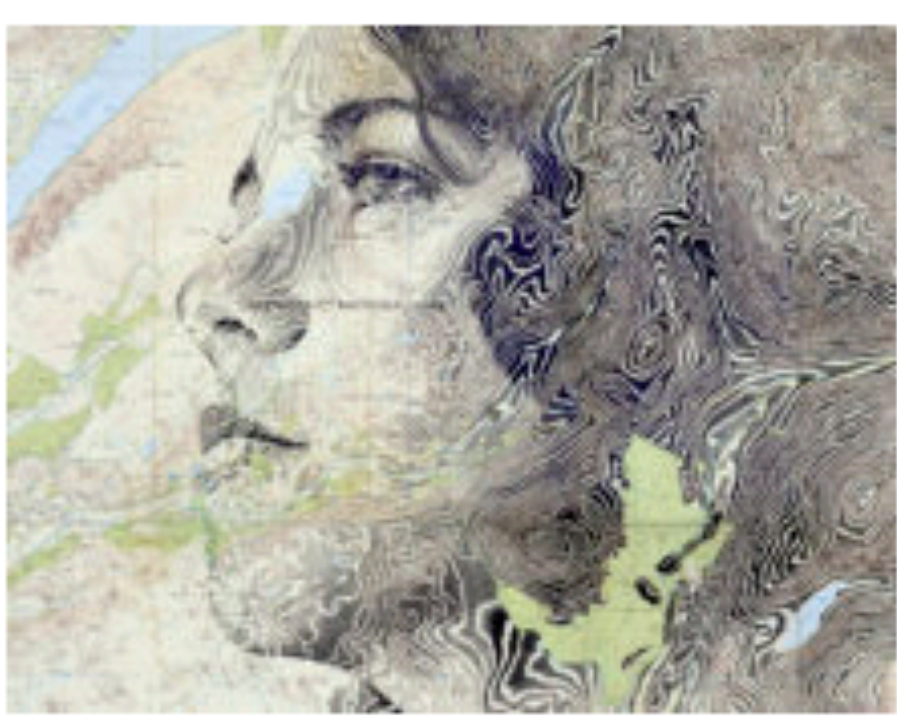
Richard Long

A walk by all roads and lanes touching or crossing an imaginary circle – 1977

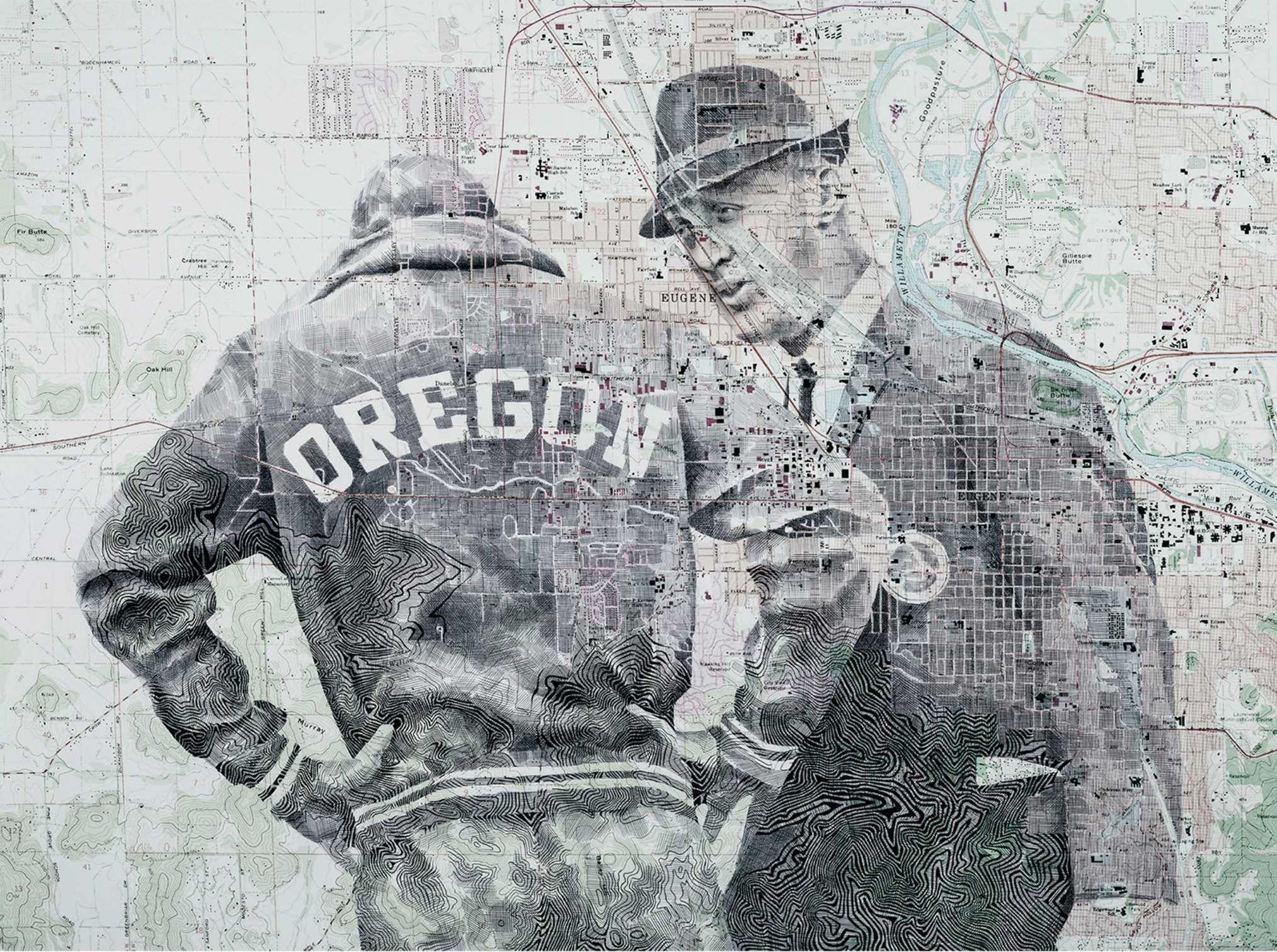


Ai Weiwei

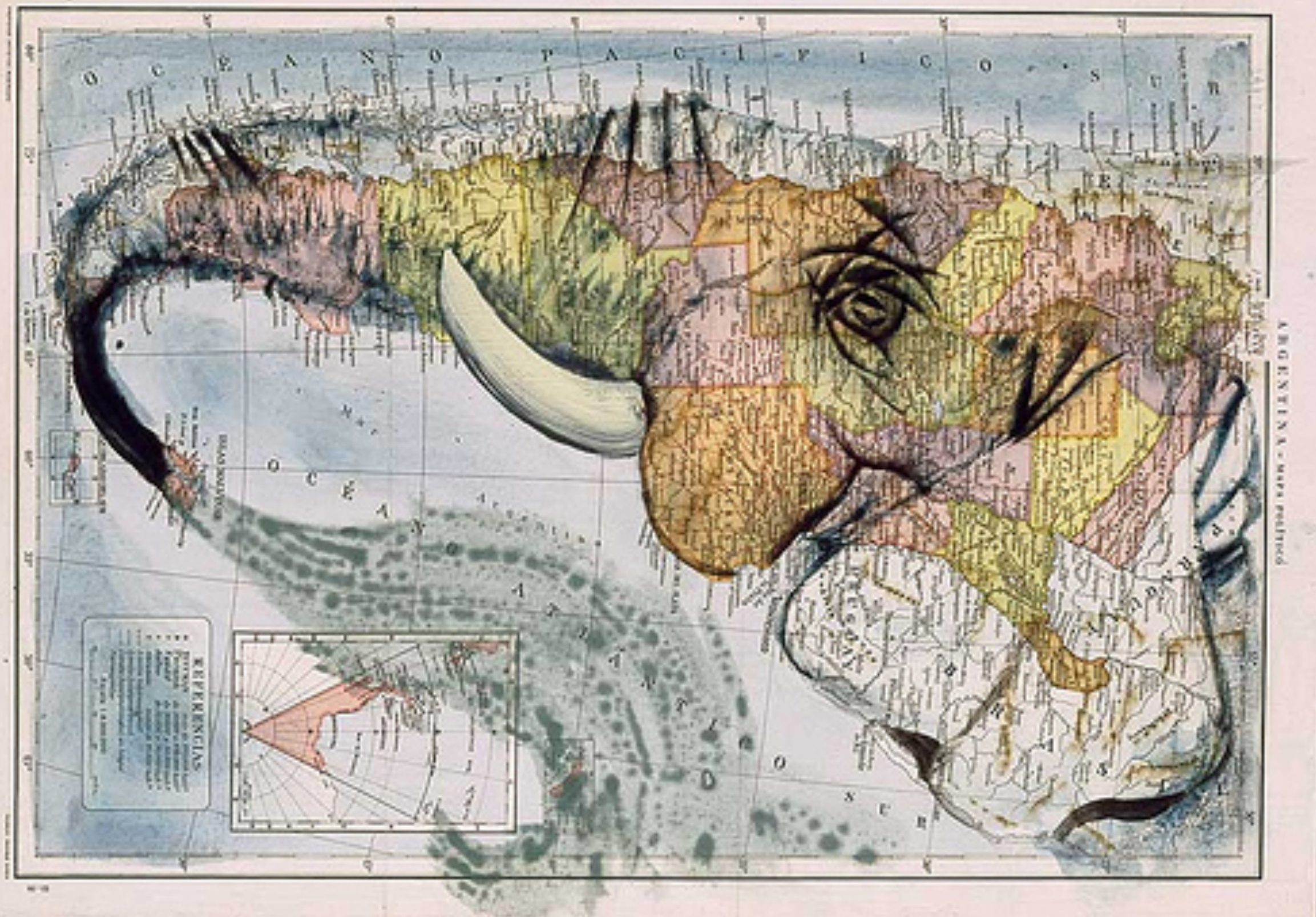




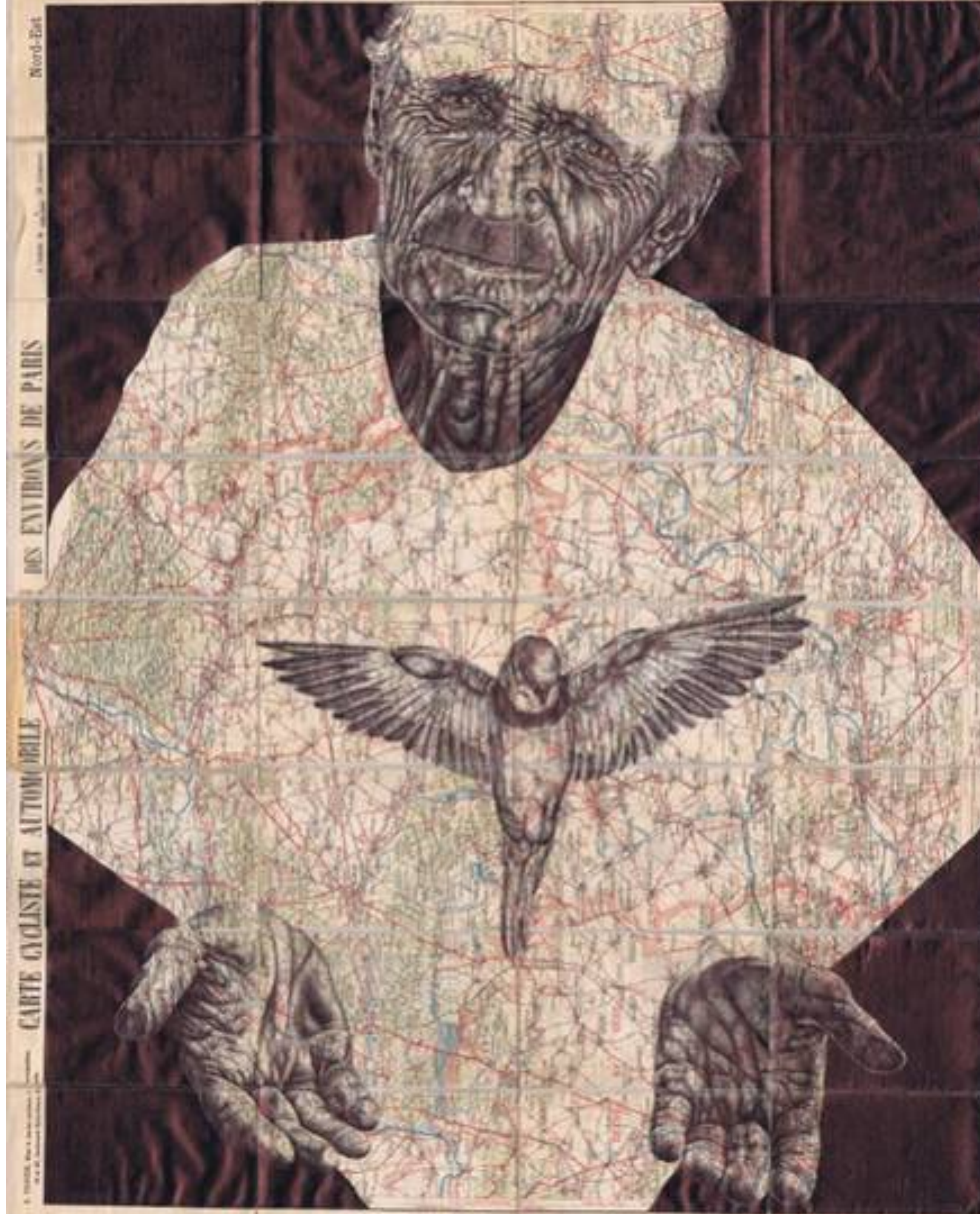
Ed Fairburn







Mark Powell



THE WORLD.

(MERCATOR'S PROJECTION.)





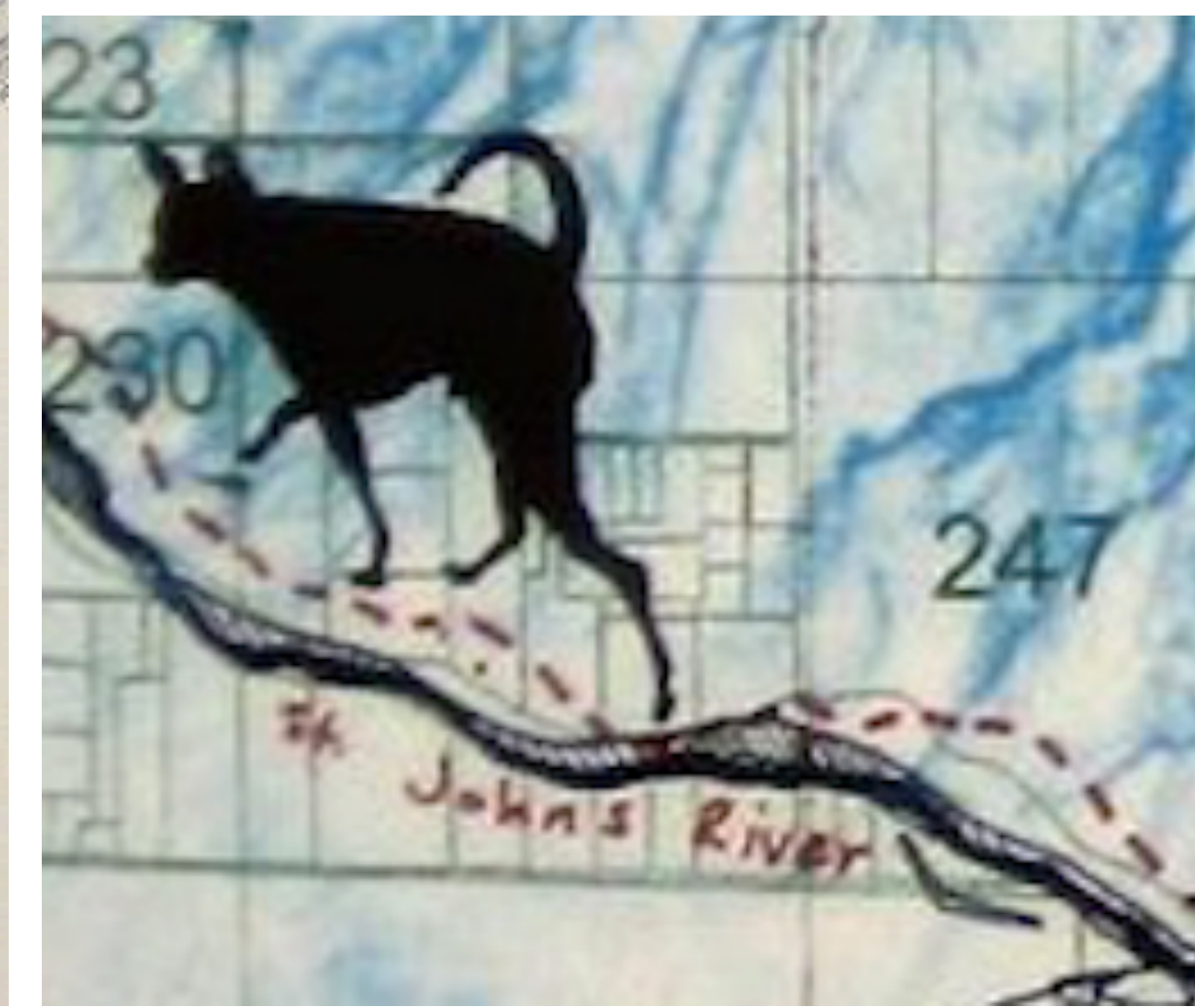
Olafur Eliasson



Takahiro Iwasaki



Matthew Rangel



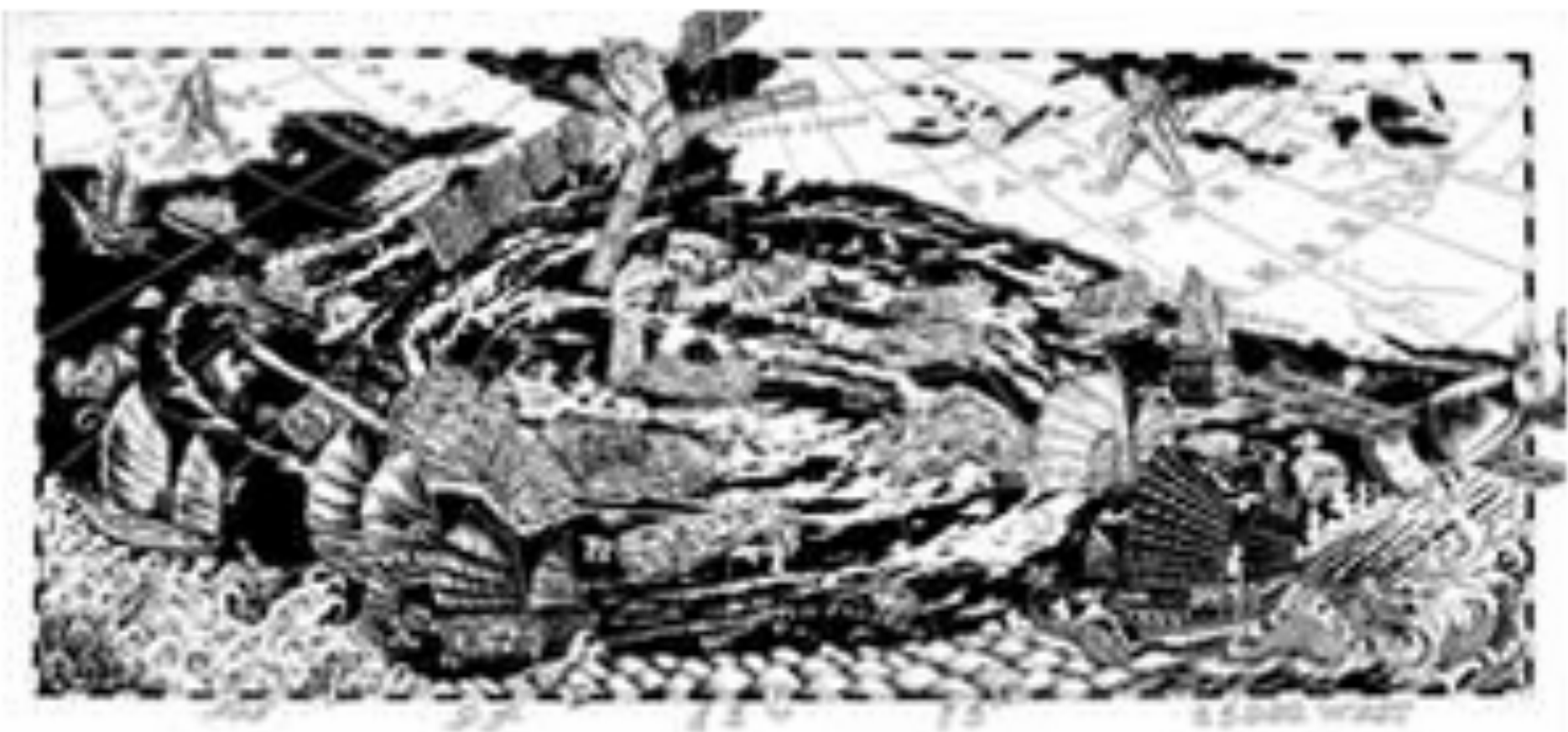


Michael Murphy



Stephen Rock - "World Map" - 1st Place





Larry and Debbie Kline - "The Alchemist Afloat in the Gyre" - 2nd Place





Brita Ness "Subdivision" - 3rd Place



Land Art from Above

See large-scale outdoor art through a unique view from space.

START EXPLORING



"Spiral Jetty" by Robert Smithson

Great Salt Lake, Utah

Constructed in 1970, "Spiral Jetty" is a land art sculpture considered to be the central work of American sculptor Robert Smithson. "Spiral Jetty" is located on the northeastern shore of Great Salt Lake near Rozel Point in Utah. It is made entirely of mud, salt crystals, basalt rocks and water, forming a 1,500-foot-long (460m), 15-foot-wide (4.6m) counterclockwise coil jutting from the shore of the lake. The water level of the lake varies with precipitation in the mountains surrounding the area, revealing the jetty in times of drought and submerging it during times of normal precipitation.



Heartland County Corn Maze

Harrisburg, South Dakota

The Heartland Country Corn Maze in Harrisburg, South Dakota, is known for its intricate maze designs such as this mama bear and her cubs. Over the years, the maze has featured many animals from fish, to deer, to dinosaurs and owls.

Satellite image captured by WorldView-2 on September 16, 2014.

Vă multumesc!

