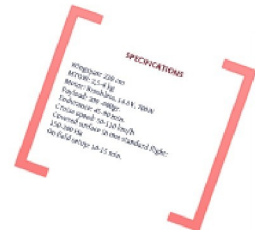




Journey UAV



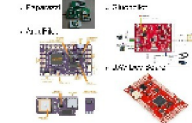
Dezvoltare serotonidă și în cazul...



Dezvoltare UAV în însoț...



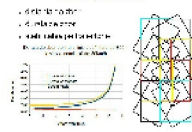
Sistemul și ni însoțit epur...



În urma greșim...



Într-un alt...



Metode de utilizare și recuperare



Centru foto



Serviciu



Aeromodelul ca platformă aerofotogrammetrică



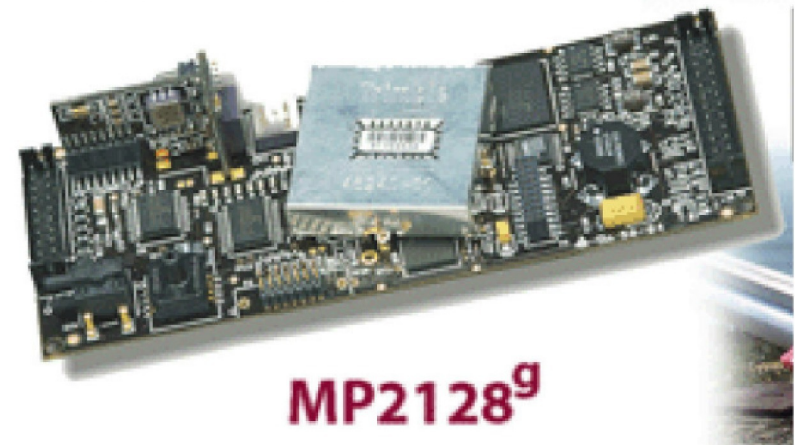
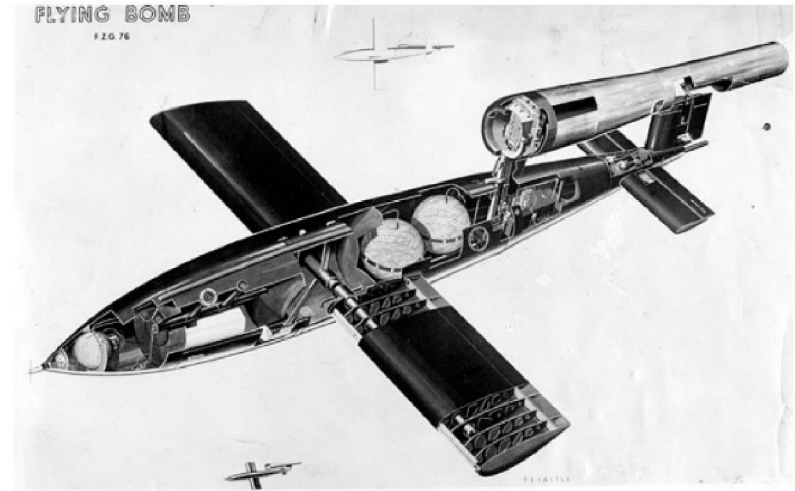
Dezvoltarea aeronautică la început

- primele zboruri – Lilienthal, Wright, Vuia, Vlaicu
- primele recorduri, premii, competiții
- utilizare militară – observație și recunoaștere
- utilizare civilă – transport pasageri, poștă



Dezvoltarea UAV la început

- primele zboruri
- premii, competiții
- utilizare militară
- utilizare civilă

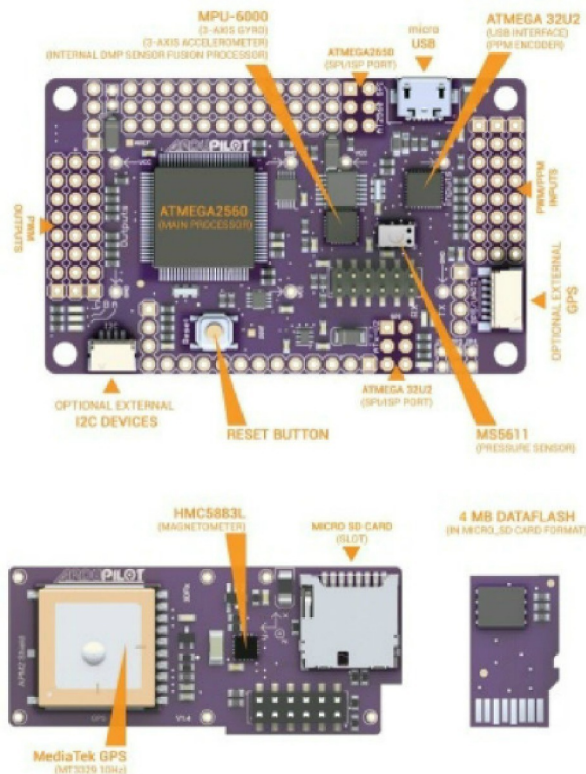


Sisteme pilot automat open source

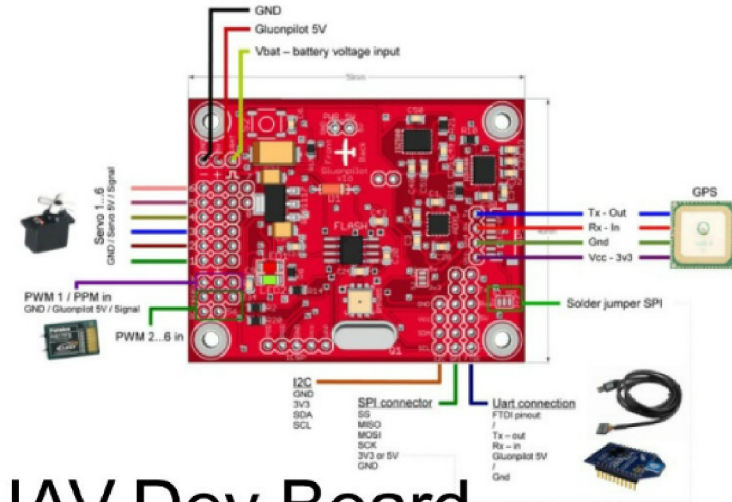
- Paparazzi



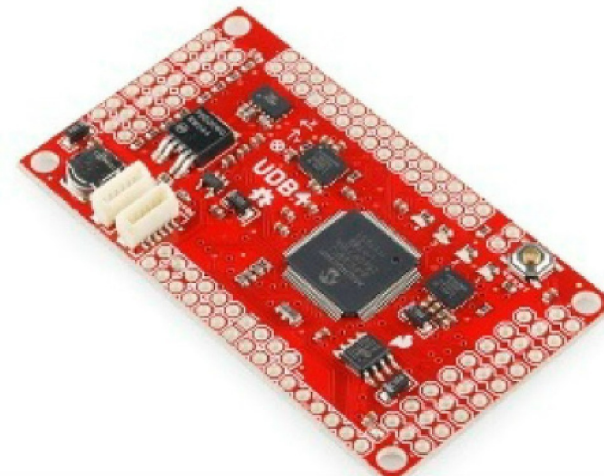
- ArduPilot



- Gluonpilot



- UAV Dev Board



Influenta greutății

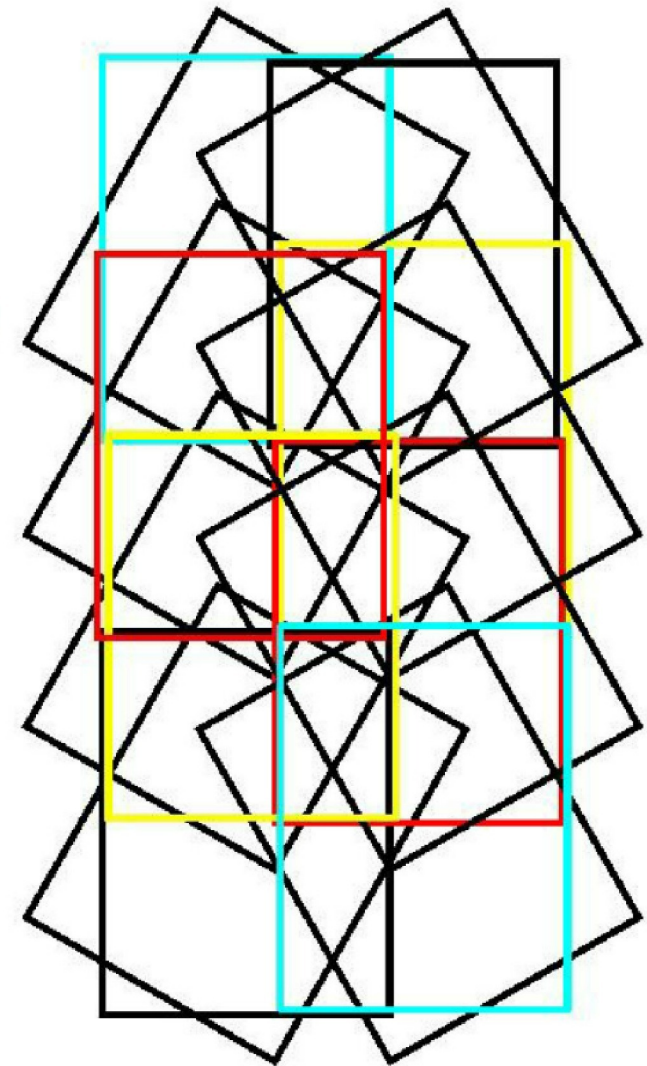
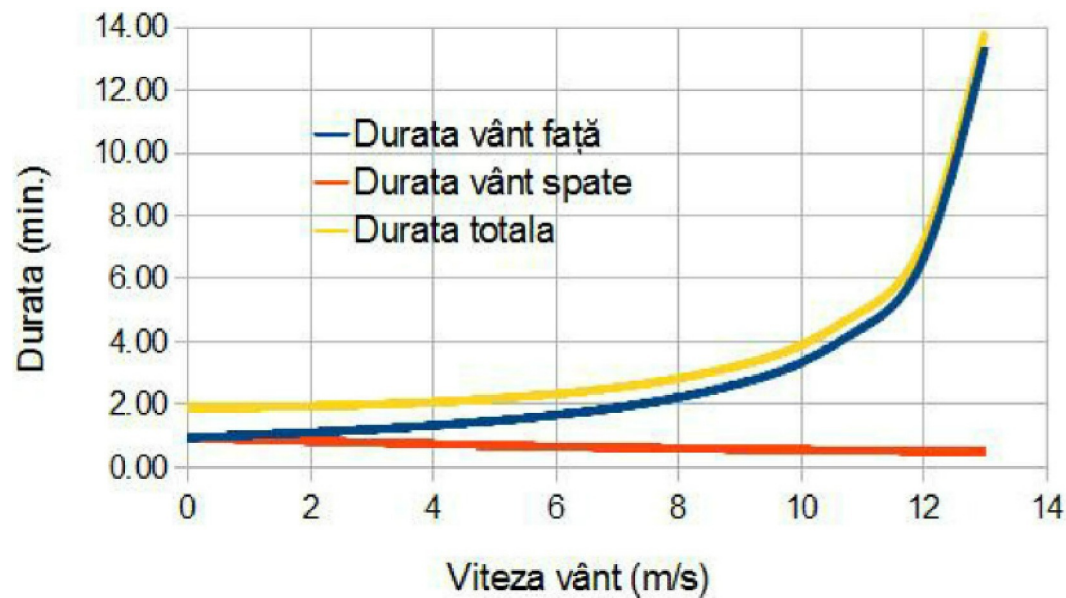
- metode de lansare
- sensibilitatea la atmosfera turbulentă
- autonomie



Influența vântului

- distanța de zbor
- durata de zbor
- stabilitatea pe traiectorie

Durata de zbor pentru o linie dus-întors de 800m
la viteza nominală de 50km/h



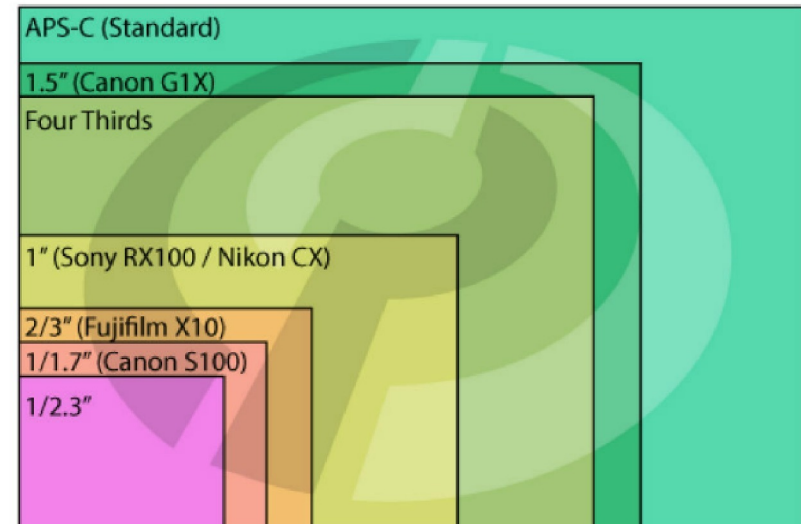
Metode de aterizare și recuperare

- manual
- automat
- parașuta
- deep-stall + airbag
- baliza sonoră și radio

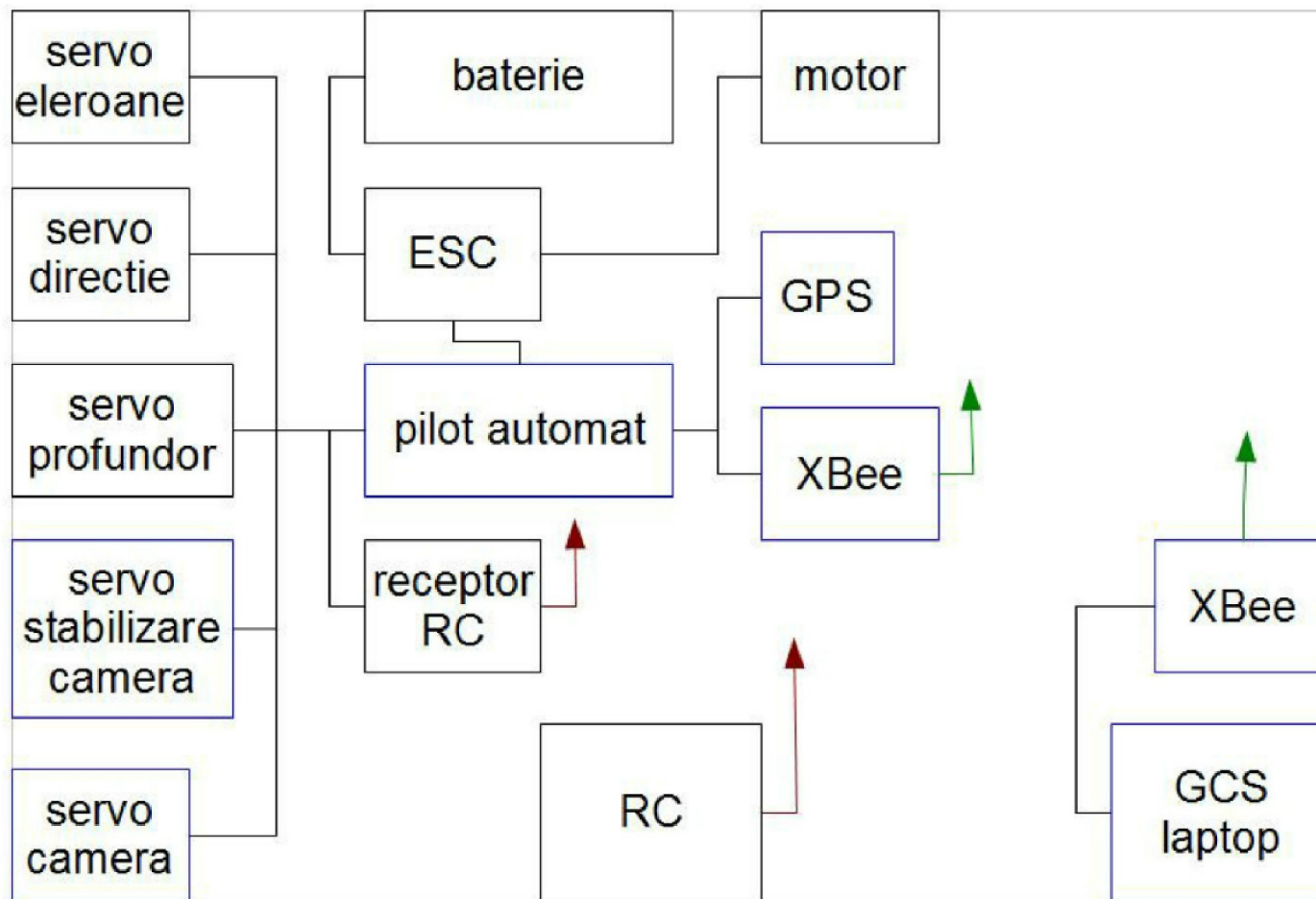


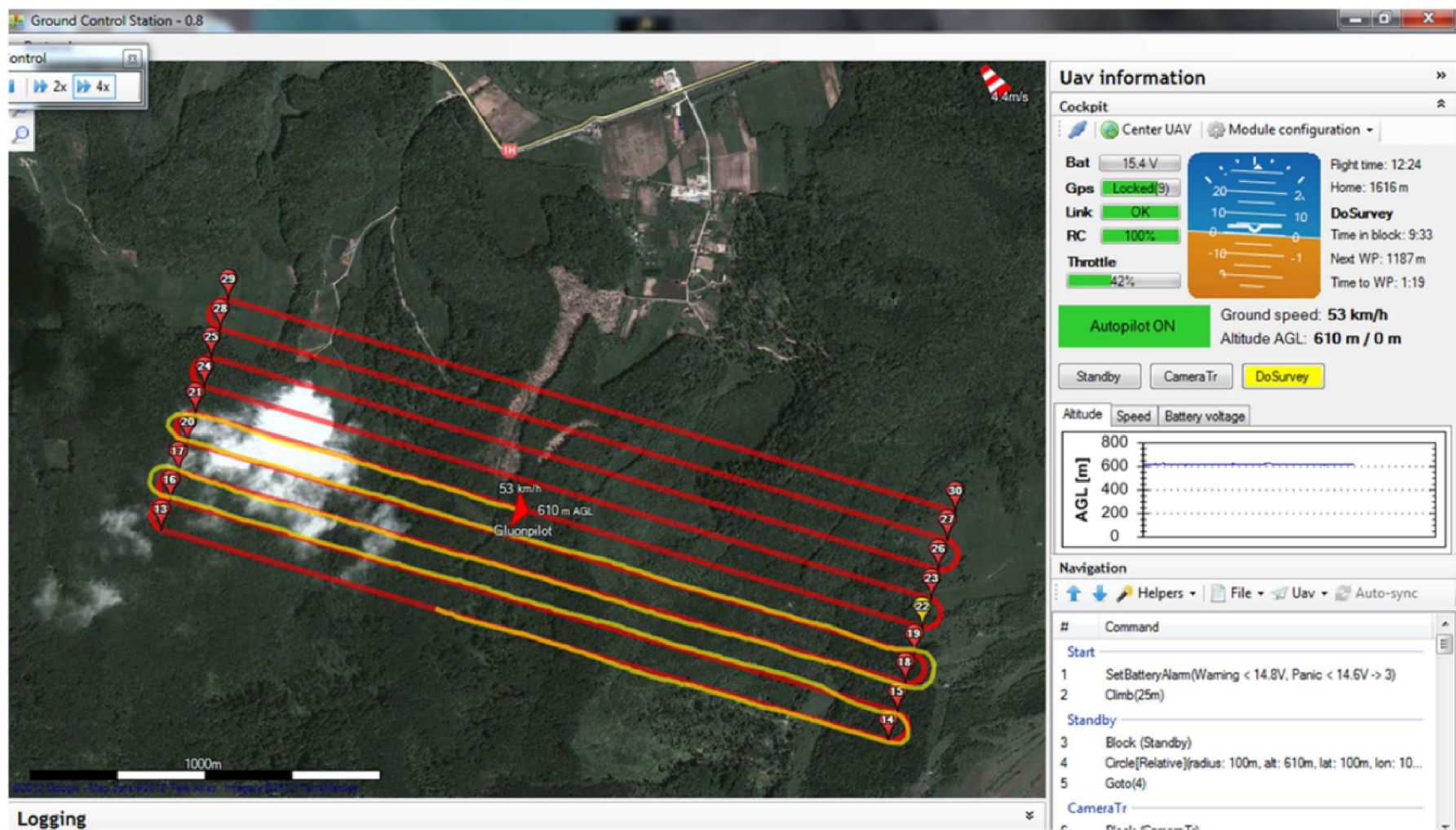
Camere foto

- capabilități, dimensiune senzor
- greutate, orientare, protecție
- programabilitate
- GPS



Schema





SPECIFICATIONS

Wingspan: 220 cm

MTOW: 2,5-4 kg

Motor: Brushless, 14.8V, 700W

Payload: 200 -600gr.

Endurance: 45-90 min.

Cruise speed: 50-110 km/h

Covered surface in one standard flight:

150-200 Ha

On field setup: 10-15 min.

In development

Launcher for easy takeoff at maximum weight.

Parachute for easy landing and recovery on small surfaces.

4T gas engine for increased endurance.

Continuously evaluating other autopilots on our flying platform.

Features

Two different cargo areas:

forward - roll stabilized ortophotography camera RGB, NIR;

central - fixed, below the wing, for advanced environmental monitoring sensors or other payload;

Advanced composite materials (glass, carbon and kevlar fibers within an aircraft certificate epoxy matrix);

Opensource autopilot, continuously growing in performance, stability, features and user community;

Waterproof - safe use in moderate rain;

R/C FHSS radio transmitter for manual and stabilized control;

Real time telemetry with inflight real time flight plan modifications;

Easy onsite setup – fast, easy, failsafe assembly.







Contact:
tel. 0723 147 514 | e-mail: journey@4qrs.ro



Journey UAV



SPECIFICATIONS

Wingspan: 220 cm
MTOW: 2,5-4 kg
Motor: Brushless, 14.8V, 700W
Payload: 200-600gr.
Endurance: 45-90 min.
Cruise speed: 50-110 km/h
Covered surface in one standard flight:
150-200 Ha
On field setup: 10-15 min.

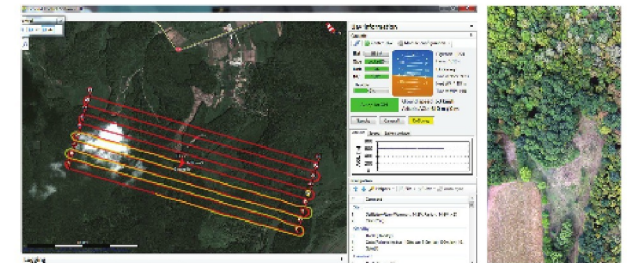
In development

Launcher for easy takeoff at maximum weight.
Parachute for easy landing and recovery on small surfaces.
4T gas engine for increased endurance.
Continuously evaluating other autopilots on our flying platform.



Features

Two different cargo areas:
forward - roll stabilized orthophotography camera RGB, NIR;
central - fixed, below the wing, for advanced environmental monitoring sensors or other payload;
Advanced composite materials (glass, carbon and kevlar fibers within an aircraft certificate epoxy matrix);
Opensource autopilot, continuously growing in performance, stability, features and user community;
Waterproof - safe use in moderate rain;
R/C FHSS radio transmitter for manual and stabilized control;
Real time telemetry with inflight real time flight plan modifications;
Easy onsite setup - fast, easy, failsafe assembly.



Journey UAV